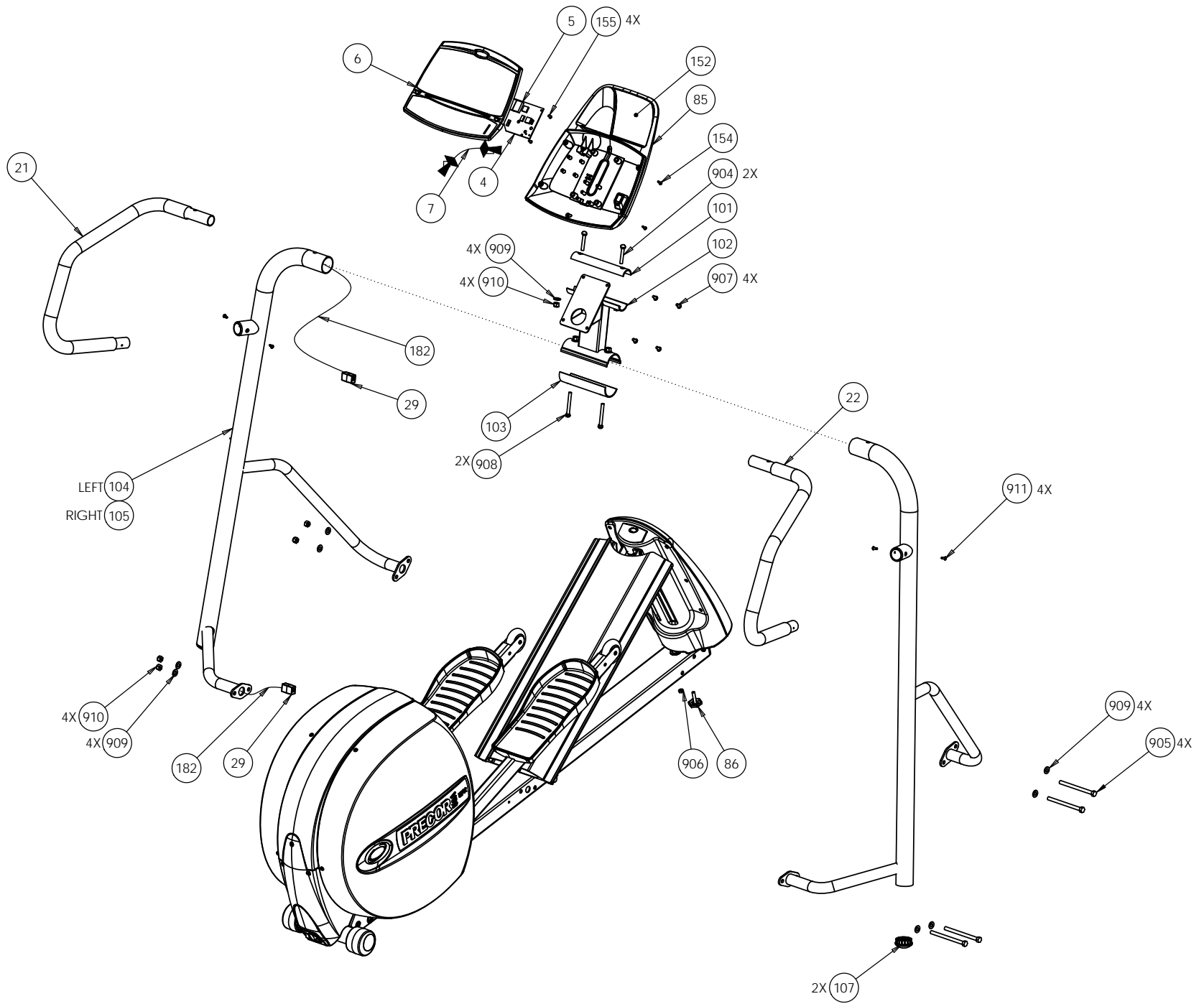
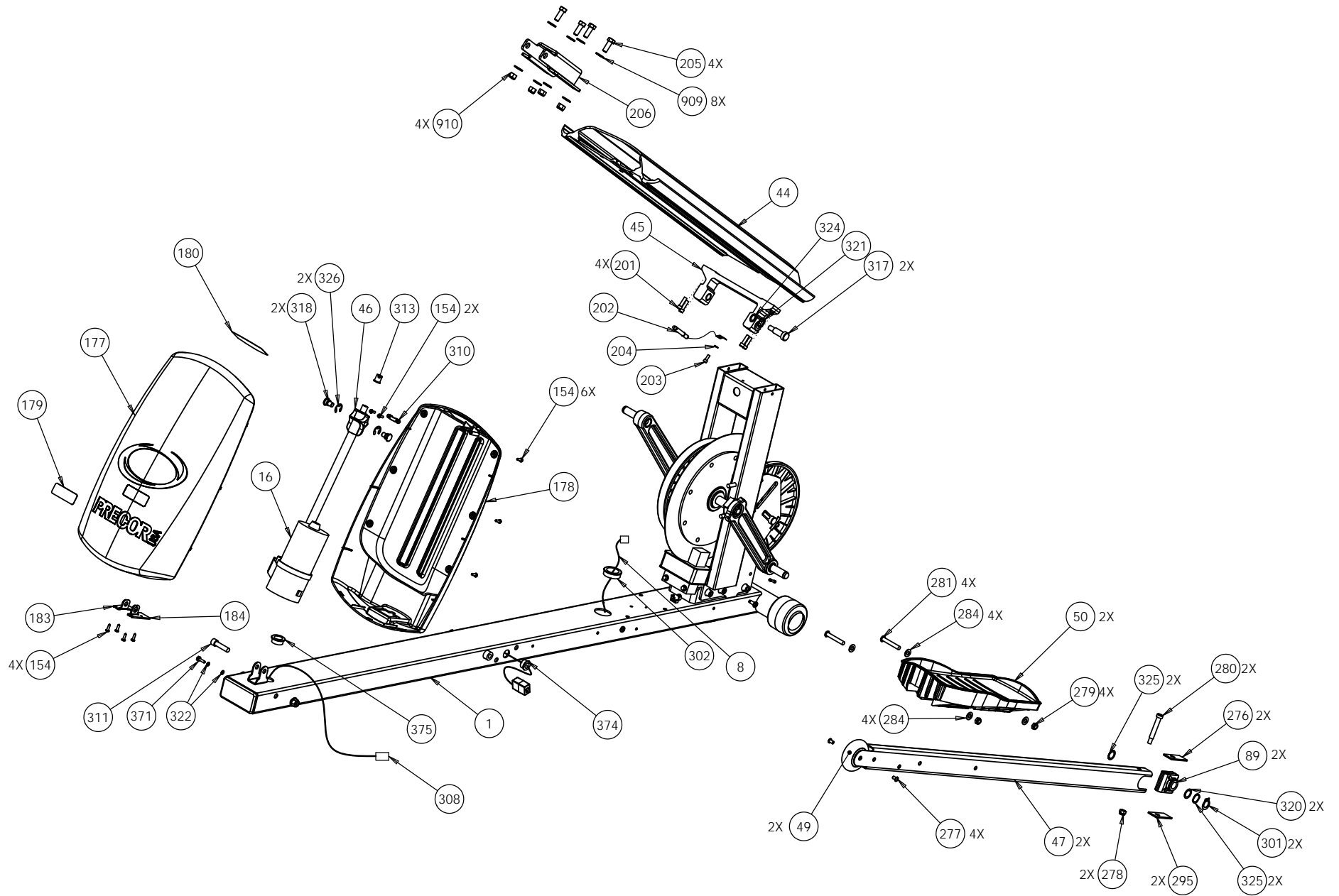


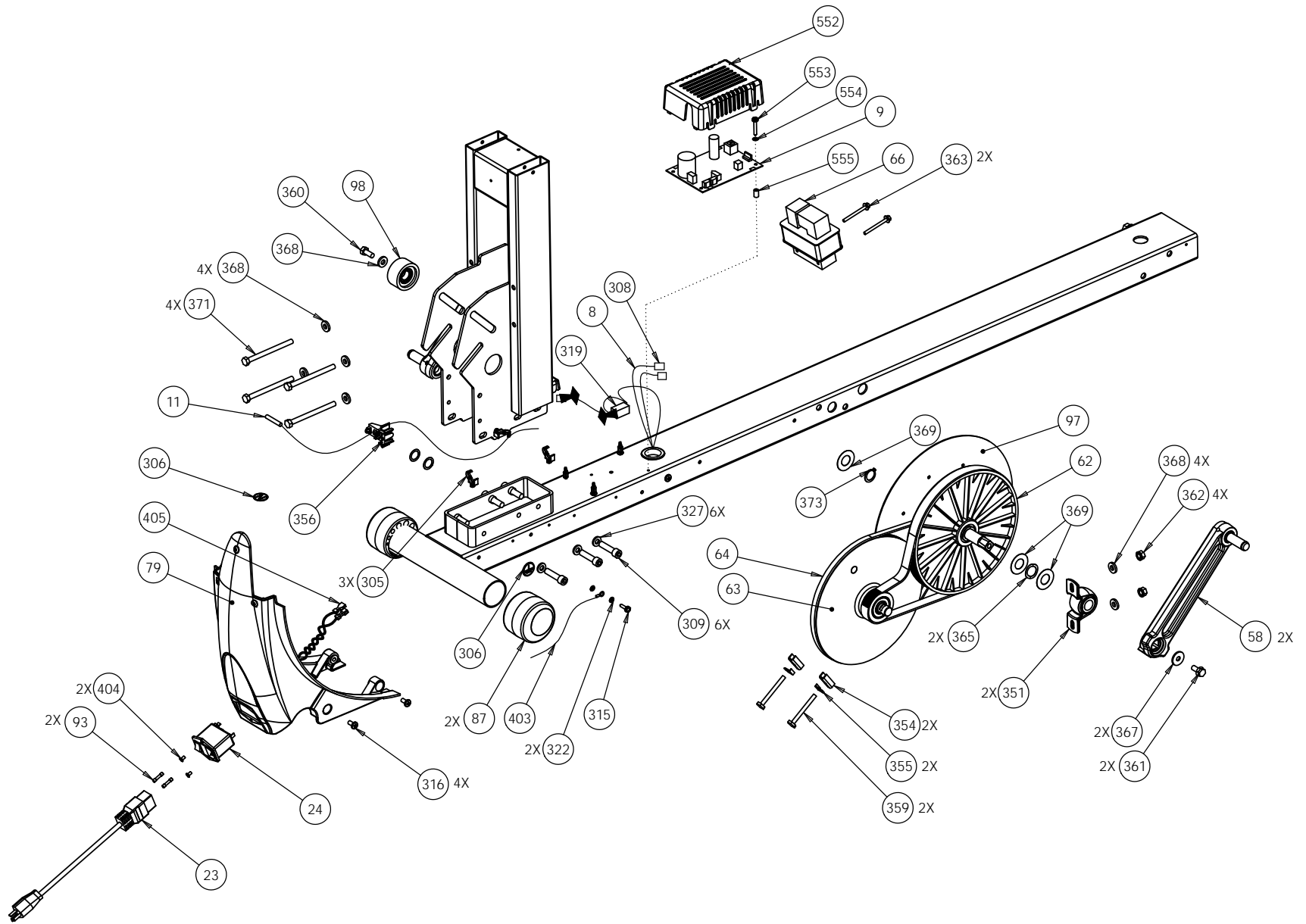
5.17i	P/N : 48221-101	SUBREV : M03
DRAWN BY : C THOMSON	DATE : 30 APR 2010	SHEET 1 OF 6



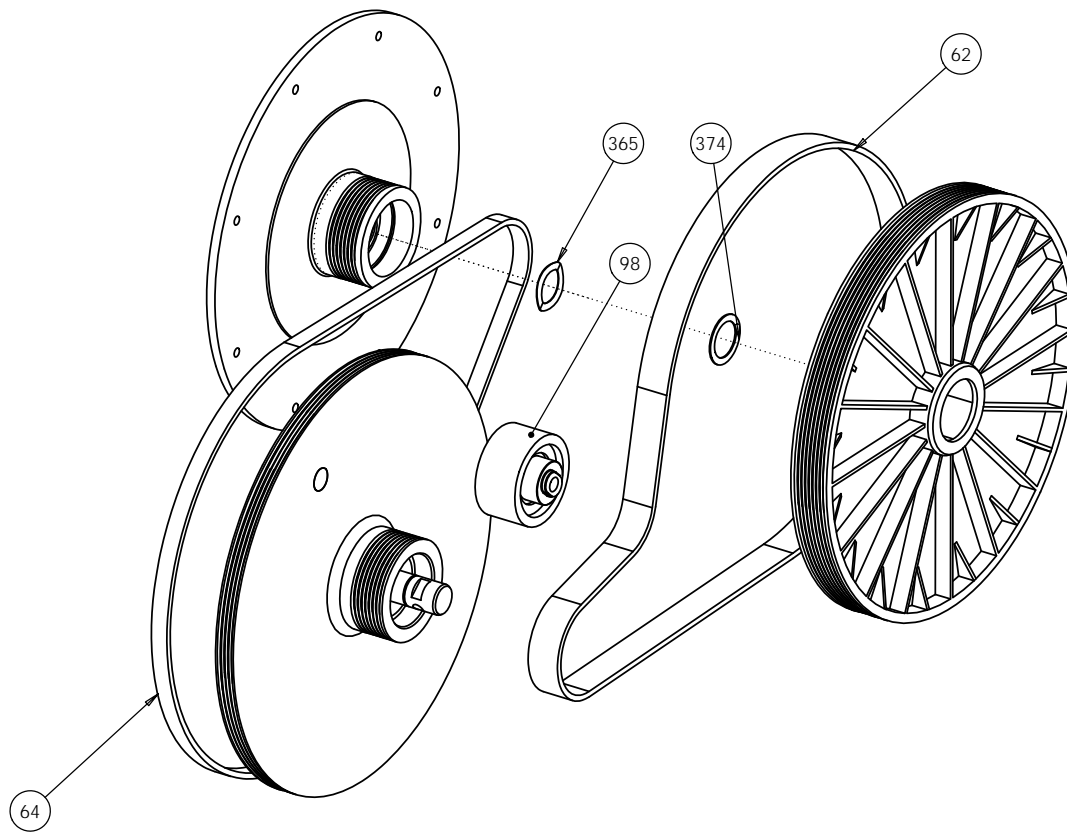
5.17i	P/N : 48221-101	SUBREV : M03
DRAWN BY : C THOMSON	DATE : 30 APR 2010	SHEET 2 OF 6



5.17i	P/N : 48221-101	SUBREV : M03
DRAWN BY : C THOMSON	DATE : 30 APR 2010	SHEET 3 OF 6

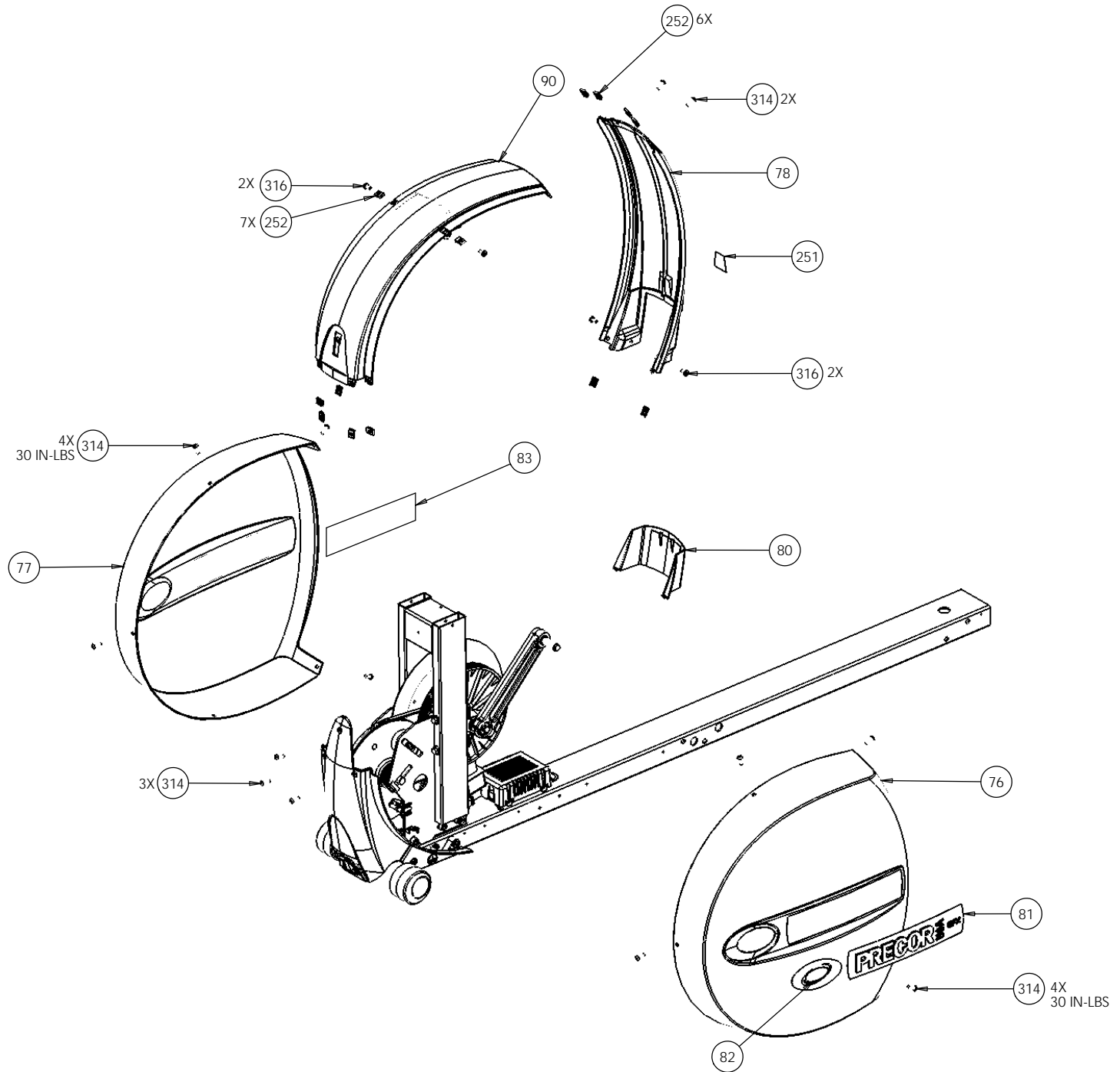


5.17i	P/N : 48221-101	SUBREV : M03
DRAWN BY : C THOMSON	DATE : 30 APR 2010	SHEET 4 OF 6



BELT ROUTING DETAIL

5.17i	P/N : 48221-101	SUBREV : M03
DRAWN BY : C THOMSON	DATE : 30 APR 2010	SHEET 5 OF 6



5.17i	P/N : 48221-101	SUBREV : M03
DRAWN BY : C THOMSON	DATE : 30 APR 2010	SHEET 6 OF 6

5.17i (serial code AMPF)

Bubble Number	Part Number	Description
1	47803101	WELDMENT, LOWER FRAME, RETAIL EFX,
4	46918110	ASSY,PCA&SW,5.17I,TD,UPR
6	47798101	DISPLAY ASSEMBLY, 5.17I, STONE GRAY
7	44905018	ASSY,CBL,MOD,8P8C,1-1,SILVER,18"
8	44905028	ASSY,CBL,MOD,8P8C,1-1,SILVER,28"
9	47913503	ASSY, PCA & SW, EFX 5.17I, LOWER
11	44440023	ASSEMBLY, REED SWITCH, 23"
16	46871101	LIFT,ACTUATOR,5.17I,120V
21	38659101	ASSY,HANDLEBAR,LEFT
22	38659102	ASSY,HANDLEBAR,RIGHT
23	10392111	POWER CORD,125VAC,10A,8.0 FT
24	12167102	PWR ENTRY MOD & FILTER,250VAC,W/2.5
27	46952202	IC,CPU,PGMD,EFX5.17I,LWR,V2.02
29	11415102	COUPLER,MOD,8P8C,INLINE,SNAP-IN
36	43329102	WIRE FORM,PLASTIC,COMMERCIAL
45	44333103	ASSY, RAMP, LIFT BRKT, RETAIL EFX
46	11749202	NUT,LIFT,MOLDED, ACME THREAD
47	44344206	STAIRARM RAIL,5.23 EFX,PT [2X1.25X0
49	48337101	ASSY, STAIRARM WHEEL, CONSUMER EFX,
50	37314108	PEDAL, FOOT
58	44363103	ASSEMBLY, CRANK ARM, RETAIL, W/PRES
62	10217130	BELT, DRIVE, POLY V (DAYCO 27-0628)
63	44301101	ASSY, STEP-UP PULLEY,RETAIL EFX,5X3
64	10217131	BELT, DRIVE, POLY V (DAYCO 27-0627)
66	47888101	ELECTROMAGNET,EC BRAKE,.093" 2 POS
75	47549101	WELDMENT, DRIVE, EFX, PAINTED
76	43606117	ASSY, EFX COVER, RIGHT RETAIL, STON
77	43606118	ASSY, EFX COVER, LEFT, 5.17I, STONE
78	44479102	ASSY, FRONT PANEL, EFX COVER, REAR,
79	43707103	SUPPORT, REAR COVER,STONE GRAY
80	46839102	TRANSITION, REAR COVER, EFX, STONE
81	47891101	LABEL, EFX COVER, REAR, PRECOR BLUE
82	47355101	LABEL, EFX LOGO, REAR COVER, DURO-L
83	47542101	LABEL, WIRING DIAGRAM, 5.17I
85	43179104	BACKPLATE, DISPLAY, COMMERCIAL ,STO
86	11406103	FOOT, LEVELER, RUBBER BASE, 1.5"LG
87	44916102	FOOT, ADJUSTABLE
89	38301101	ASSY,PIVOT BLOCK
90	44480103	ASSY, TOP PANEL, EFX COVER, REAR, S
93	12223250	FUSE,TIME-DELAY,2.5A,250V,5X20MM
94	11075105	FUSE,2.00A,250VAC,SLO,RAD,UL248-14
97	44300103	ASSY, DRIVE INPUT, RETAIL
98	38320104	IDLER,PULLEY
101	38342103	CLAMP, HANDLEBAR, UPPER, STONE GRAY
102	46934106	WELDMENT, MOUNT, DISPLAY, 5.17I, PA
103	46933103	CLAMP, LOWER, BOTTOM HALF, STONE GR
104	46928107	WELDMENT, MAIN TUBE, LEFT, RETAIL E
105	46928108	WELDMENT, MAIN TUBE, RIGHT, RETAIL
106	11311101	ENDCAP, REC TUBE, BLACK PLASTIC, 50

107	38667101	FOOT,TUBE END
152	47536103	LABEL, ACCESSORY TRAY, ENG, 5.17I
154	PMTN016050	SCREW,TCS,#8X1/2,PHIL,BLK SHARPERIZ
155	MGCN016038	SCREW,MCH,8-32X3/8,PANHD,PHIL,
177	38779102	COVER, LIFT, FRONT, 5.17, STONE GR
178	38778102	COVER, LIFT, REAR, 5.17, STONE GREY
179	47892101	LABEL, FRONT COVER, GATE, 5.17, STO
180	47893101	LABEL, FRONT COVER, TOP, 5.17, STON
182	44905078	ASSY,CBL,MOD,8P8C,1-1,SILVER,78"
183	47074102	BRKT,MOUNTING,COVER,LIFT,5.17I, PT
184	47074101	BRKT,MOUNTING,COVER,LIFT,5.17I, W/P
201	CATN025088	SCREW,SKHD,1/4-20X7/8,BLK SHARPERIZ
202	11476102	PIN, RING, LOCKOUT
203	CBTN019050	SCREW,SKHD,#10X32X0.50,BLK SHRPRZD
204	WATNN020002	WASHER, LK-INT, #10, ID=.200,
205	HATN038100	SCREW,HEXHEAD,GRADE2,3/8-16X1,BLK S
206	48635101	BRACKET, END, RAMP, 5.17I
250	12223250	FUSE,TIME-DELAY,2.5A,250V,5X20MM
251	47546101	LABEL, CAUTION
252	10136103	CLIP,U TYPE, TINNEMAN, 1/4-20
276	48340101	SPACER, RAIL, URETHANE
277	TENE006010	SCREW,BTTNHD,SKT C/S,M6X1X10MM
278	KDTN031025	LOCKNUT, FULL, 5/16-18,BLK SHARPERI
279	KATN031016	LOCKNUT,HALF, 5/16-18,BLK SHARPERIZ
280	RANN031200	SCREW,SHLD,5/16 X 2,HEXSC
281	HATN031200	SCREW, HEX HD, 5/16-18 X 2, BLK SHA
284	WEGN031007	WASHER, FLT, 5/16X.688X.065,SS, BLK
295	48340102	SPACER, RAIL ,URETHANE, RED
299	50594101	ASSY, 5.17I RAMP REPLACEMENT KIT, A
301	AAHN063003	RING, RETAINER, 5/8, EXTERNAL
302	10178112	BUSHING, SNAP
305	12515101	CLAMP, CABLE, BLACK, RELEASABLE ON
306	33984101	LABEL, SAFETY, GROUND SYMBOL
308	45109060	ASSY,CBL,LPCA TO LIFT,60"
309	CATN031075	SCREW,SKHD,5/16-18X0.75,BLK SHARPER
310	39407101	KEEPER,BEARING,ABS
311	CCGN038150	SCREW,SKHD,3/8-16X1.50,BLK OXIDE
313	10043121	BEARING,FLG,.377IDX.502OD
314	TFTN025075	SCREW,BTHD,1/4-20X3/4,BLK SHARPERIZ
315	PKCN019075	SCREW,S/T,#10X.75,WSHHXHD,ZN
316	PANTN025050	SCREW,S/T,#1/4-20X1/2,PANHD,PHIL,TR
317	RANN038125	SCREW,SHLDR,3/8 X 1 1/4 ,HEX
318	38448102	LIFT PIN
319	12153101	FERRITE,CLAMP-ON,RND CABLE,28 MATL
320	WAGNN062001	WASHER, WAVE, .87 OD X .62 ID
321	WAGNN048001	WASHER,WAVE (SSR-0062)
322	WATNN020002	WASHER, LK-INT, #10, ID=.200,
324	WNNN051002	WASHER,SHIM,1/2X3/4X.020THK
325	WNNN063001	WASHER, FLT, 5/8X.880X.010
326	AEHN050004	E-RING,.50 DIA X .042 THICK
327	WRCN031009	WASHER,GRADE 8,3/8,13/32 ID,13/16OD
351	11245104	BUSHING,HEAVY DUTY PILLOW BLK

354	37385101	BRACKET, TENSIONER
355	37855103	TAB, LOCKING
356	47553102	RETAINER, SENSOR
359	HACN025200	SCREW, 1/4-20 X2, HEX, GR 2, ZN
360	HCCN031075	SCREW, HEX HD, GRADE 5, 5/16-18 X .
361	HRWE031075	SCREW, SERRATED FLANGE HD, HEX, NYL
362	KGCN031027	LOCKNUT, STARWASHER, 5/16-18, 1/2
363	MACN019200	SCREW, HEX WASHER HEAD, #10-32 X 2.0
365	WAHNN080021	WASHER, WAVE, NONSPLIT, .800, STL
367	WNNN032009	WASHER, FLT, .321X1.00X.090 THK
368	WBANN034013	WASHER, FLAT, ID=11/32, OD3/4, TH=.125,
369	WNNN075001	WASHER, SHIM, .75X1.50X.010 THK
371	HCCN031400	SCREW, HEX HD, GRADE 5, 5/16-18
373	AAHN078004	RING, EXTERNAL, .781, .042 THK
374	10178101	BUSHING, SNAP, 2096
375	10178107	BUSHING, SNAP
391	12531101	STANDOFF, PCB SUPPORT, BLIND HOLE, SNA
401	37436101	LABEL, CHASIS NEUTRAL
402	44435021	ASSY, CBL, 2-COND, 18AWG, 21", QK DISC
403	44437013	ASSY, CABLE, GND, RING/QK DISC, 13"
404	MNCN013031	SCREW, MCH, 6-32X5/16, FLTHD, PHIL
551	12529101	SPACER, #10 X 1/2" LONG, ZN
552	47774103	COVER, LPCA, 5.3X
553	PKCN019125	SCREW, S/T, #10X1.25, WSHHXHD, ZN
554	WATNN020002	WASHER, LK-INT, #10, ID=.200,
901	46956102	KIT, HARDWARE, STONE GRAY, 5.171
904	BATN038200	BOLT, CARRIAGE, 3/8-16, BLK SHARPER
905	HATN038500	SCREW, HEXHEAD, GRD2, 3/8-16X5, BLK SH
906	KPCN031019	NUT, HEX THIN, 5/16-18, ZN
907	MGTN025050	SCREW, PANHD, 1/4-20 X .5, BLK SHAR
909	WEGN038007	WASHER, FLT, 3/8, ID=.406, SS, BLK
910	KDTN038044	LOCKNUT, FULL, 3/8-16, .433, BLK SHARPE
911	PGTN019050	SCREW, #10X1/2, SELF-DRILLING, BLK SH
999	48135103	KIT, LITERATURE, 5.171